

My memories of Helmdon School

My first memory of being in Helmdon School was starting with my twin brother Jonathan and I thought it was FUN. I remember playing in the sand pit, which was in the classroom then. Our play area was where the reception cloakroom and ICT suite are now. I remember my teacher in Year 2 was Mrs Toman and I enjoyed my art lessons. In Year 5 I enjoyed taking part in the Christmas play where I played Joseph and Hayley played Mary. In Years 4 and 5 I remember choir with Mrs Darwin and the singing was fun. I especially remember singing the vegetable song.

Our trip to Torquay in Year 5 was interesting. On the trip down we saw lots of strange things such as huge golf balls on the tops of some buildings and where we were going along the motorway we saw a tower, most of which had fallen down and a large burnt out building which could have been a hospital.

The best activity for me was the zip wire. We had to swing across from the top of a building to the far side of a field. We were quite high up. I thought this was exciting but not too scary. It was very safe because we had harnesses and helmets and we were clipped to the wire in several places. At dinner times we had our own special places in the dining room for Helmdon School pupils. The dining room was a long way from where we slept and we had to be careful that we did not get lost. The food was alright. The whole place was very, very big. On the way home we stopped at the seaside to get lunch. That was cool. We threw stones into the sea and I got wet.

By Robert Bearman

Governors of the School

Name	Governor Type	Phone no.	Office expiry
Sue Blackburn	Headteacher	Tel: 01295 768126	
David Brookhouse	Parish Council	Tel: 01295 760315	Oct 03
Cecil Harrold	LEA	Tel: 01295 760122	Jan 05
Niki Phillips	Community	Tel: 01295 768202	May 03
Colin Childerley	LEA		Sep 07
Nick Stone	LEA	Tel: 01295 760674	Nov 04
John Plunkett	Community	Tel: 01295 768183	Oct 06
Jennie Smith	Parent		Nov 07
Sandra Wroe	Parent		Nov 07
Danny Moody	Community		Sep 06
Richard Pamment	Parent		Mar 06
Gary Turner			Mar 06
Andrew Threlfall	Community	Tel: 01295 760525	Oct 06

Clerk to the Governors: Mrs Nickie Waghorne

Special Thanks

My thanks to all the team, governors, staff, parents and pupils for their combined efforts in assisting in the production of this report. A further thank you to the Governing Body for their dedication and support for the school over the past year.

Fiona Toman has left the school to take up the Headship of Greatworth Primary School. Whilst her leaving party clearly demonstrated the depth of affection and esteem for her, her tremendous dedication and input into the school will always be remembered with gratitude at Helmdon.

Thanks also, to Sallie Connery for her contribution over many years to the Governing Body as a non-teaching Governor.

Kathy Quiney has resigned as a *Community Governor* due to many commitments and her valuable contributions have been much appreciated.

Finally, but certainly not least, my thanks to all the staff for their tolerance, fortitude and good humour during the tribulations of the recent building works.

The future....

We now have a vastly improved school, more in keeping with today, and new teachers, Tracey Munslow who has been appointed Deputy Head, Susan Nilsson who assumes the post previously held by Rose Darwin, Mrs Hale and Mrs Juden as teaching assistants, Nickie Waghorne as clerical assistant and Sandra Wroe as general support assistant.

I am confident that we now have the means to build on the successes of the past and more than justify all the recent changes.

Cecil Harrold
Chair of *Governors*

Letter from the Chair of Governors

22 Bell Close
Helmdon
Northants
NN13 5UH

October 2004

Dear Parents, Guardians & Carers,

This year's Governors' Annual General Meeting is on Thursday 7 October at 6.30pm followed by a School Open Evening at 7 pm.

We hope as many of you as possible will join us, primarily to celebrate the completion of the recent building work. Also we hope you will take the opportunity to walk around the school and see the improvements and view some of the pupils' work.

As in previous years, this will be an informal occasion but please feel free to ask questions.

The Governing Body look forward to meeting you.

Yours sincerely,

Cecil Harrold
Chair of Governors

Letter from Sue Blackburn, Headteacher

Dear Parents

The Annual Report is a summary of the school's progress over the past year and gives our Governing Body the opportunity to highlight our successes and changes. We also look to the future and this report is a starting point for building on our firm foundation of excellence in terms of results, achievements and ethos, which has been established at Helmdon over many years.

We were delighted with our test results this year having achieved 100% of our pupils attaining level 4 and above in science in Key Stage 2 and 100% level 4 in reading. We achieved 89% level 2 and above in mathematics in Key Stage 1. We recognise the hard work and dedication of the staff at Helmdon who have all worked to achieve such high standards.

The highlights of our school year have been many and varied. Our Christmas production brought the whole school together in our African themed production of "The Peace Child. " The children all enjoyed tie dying their costumes and dancing and singing to the African music. We ended our year with our version of "A Midsummer Night's Dream". The quality of the production edited and abridged by Mrs Edmondson was breathtaking. Everyone was astounded by the ability of our talented children in delivering long well rehearsed Shakesperian parts.

Letter from Sue Blackburn, Headteacher (cont.)

Our major project this year was the extension to the front of the school, which we are delighted with. We have created new and larger offices, a corridor past Miss Nilsson's classroom and an extended staff room and covered walkway outside the back of the building.

We welcome the opportunity of opening the school to parents and members of the community on our Governors Annual meeting and combined open evening on Thursday 7th October at 6.30pm.

Thank you to you, our parents, who have continued to give so much time and enthusiasm in supporting the school not only in attending our sharing assemblies and harvest festivals, but also in the various fund raising events. We value your involvement in offering help with classroom activities and reading. The community participation in our school is exceptional and is certainly a contributory factor in making our school so successful.

Yours sincerely

Sue Blackburn

Reflections of Helmdon School

A couple of weeks ago, a man called Mr Ivy (Chalky) brought in four owls to show the whole school. He brought in two barn owls, one Eagle Owl and an Indian Rock owl. The Barn owls looked all-posh like and the other two were all-energetic and stuff. The Barn Owls didn't have names but the other two did, the Eagle owl was called Gunner and the Indian Rock owl was called Barney, they also felt really, really soft especially on their front. They were the best.

When I was in Year 5, I was on a field trip to the Conservation Area in Helmdon which is very neat and tidy and everything was beautiful, what we did was look at all the wildlife there and we tried to catch some of the wildlife there, and when we caught it we examined it to see what it was. When we went there it was a brilliant day because it was nice and sunny, not a cloud in the sky, that is why I like the conservation area.

On the 29th March –2nd April the whole of Year 5 went on a residential trip in Torquay called Barton Hall. When we went there it was fun as we got to go to bed late and they did nice meals, but you had to wake up early in the morning (7.00am), one of my favourite activities was when I went on a thing called the zip wire. The staff member looked just like me but of course he was much bigger. Barton Hall was one of the best residential trips that I have ever been on.

When I was in Year 5, for a whole term we went swimming every week on a Thursday. When it was the first week we were told the safety sounds and instructions. Then I told them what badge I was so they could put me in the right group. At the time I could do 100m but now I can do more. The first time I went I had an infection so I couldn't do it for 7 weeks. Swimming was good in Year 5.

In Year 5 we did a play called Midsummer's Night Dream, it was a very good play indeed. In the play I played Smug the lion, which was one of the carpenters in the city. I had to speak in a very

dull, low voice; I liked it because everyone liked my acting and me. A swell, everyone liked me because I was funny: Midsummer's Night Dream was my 2nd best play that I have ever played in my life at Helmdon.

By Ashley Valentine

Statistics and Dates

SCHOOL TERM DATES

ACADEMIC YEAR 2004-05

AUTUMN HALF TERM	Close Re-Open to Pupils Training Day	Friday 22 October Monday 1 November Monday 22 November
CHRISTMAS 2004	Close Re-Open to Pupils	Friday 17 December Tuesday 4 January
SPRING HALF TERM	Close Training Day Re-Open to Pupils	Thursday 10 th February Friday 11 February Monday 21 February
EASTER 2005	Close Re-Open to Pupils	Friday 18 March Monday 4 April
MAY DAY	Close Training Day Re-open	Thursday 28 April Friday 29 April Tuesday 3 May
SUMMER HALF TERM	Close Re-Open to Pupils	Friday 27 May Monday 6 June
SUMMER 2005	Close	Friday 22 July

Pupil Absences

Total Possible attendance:	38640	(Yrs 1-6 on roll x days x 2)
Authorised Absences:	3.3%	
Unauthorised Absences:	0%	

The number of authorised absences is mainly due to the number of family holidays taken in term time. Although families are permitted up to 10 days annual leave during any academic year at the discretion of the Headteacher, more than 10 days is not permitted and has to be recorded as an unauthorised absence. Holidays during SATS testing will be classed as unauthorised absence. We would ask parents to phone the office on the first day of your child's illness and to send a sick note into school for any subsequent days so that an authorised absence is recorded in the register and we would like to thank parents who already follow this procedure.

Progress with the Post OFSTED Action Plan

The targets outlined for key stage SATs results in 2004 have been exceeded in Key Stages 1. The percentages achieved are shown on appendices 1 & 2 of the report. We achieved 100% level 4 and above in science for those children taking the tests in Key Stage 2 and were delighted with 77% of children achieving level 5 in Mathematics. We achieved 89% level 2 and above in Mathematics and 84 % in writing for those children taking the tests this year in Key Stage 1. Targets are set for a specific cohort of children to reflect the range of ability in that particular year group.

Targets set for 2005

Key stage 1 % achieving level 2 Or above	Subject	2002	2003	2004	2005
	Reading	88	66	77	86
	Writing	88	93	72	86
	Mathematics	88	100	77	95
Key Stage 2 % achieving level 4 or above					
	English	85	86	100	87
	Mathematics	90	86	100	83
	Science	90	86	100	83
Key Stage 2 % Achieving level 5 or more					
	English	45	24	69	22
	Mathematics	35	38	46	35
	Science	45	38	85	35

Staff Training

All staff are keen to keep abreast of new initiatives and develop themselves professionally through training opportunities.

Literacy, numeracy and assessment courses are attended regularly by all members of staff and in-house training is always high on the agenda. We will be working closely with Magdalen College School, who have gained Mathematics and ICT specialist status, over the next few years. We will benefit from additional technical support and also the input from an ICT teacher who has been employed to support local primary schools.

This year Mrs Blackburn has continued her work with ITHAKA, the National College for School Leadership, and the LEA Primary Strategy Consultant Leader Programme and an M.A at UCN, Northampton.

The Foundation Stage Team have worked hard on the effective Early Learning Project and achieved accreditation in June. This is a recognised award and required a great deal of hard work on behalf of the team. Well done to Fiona Toman, Pauline Watson and Caren Whitehouse.

Carole Riley has introduced a new PE initiative for schools-Schools Sports Co-coordinator Partnership. This is an exciting new initiative and has increased links between secondary and primary schools.

Celia Edmondson has participated on a series of creative writing courses, which she found inspirational.

Sarah Stubbs has embarked on a foundation degree course at University College Northampton with the ultimate goal of becoming a class teacher. We wish her luck with her studies and congratulate her on gaining a place at the college. Sarah will continue to work as a teaching assistant in Year 3 / 4 we are not ready to lose her yet!

Judith Wait has now completed the majority of the training associated with her varied and demanding role. Now that the building work has been completed we can even file successfully!

All teaching assistants undertook basic first aid training recently and some of our team are considering undertaking training to become a Higher Teaching Assistant.

We would like to thank all staff for the time they dedicate to attending courses and doing assignments and follow up work. It is this, which allows Helmdon School to keep abreast of new initiatives and continue to thrive as a successful school.

Finance

A breakdown of the major expenditure areas is provided in the table below.

2003/04		Projected 2004/05
	INCOME	
£349,180	LEA Final Budget Allocation	£347,960
£4,500	Lettings, bank interest and sundries	£5,500
£4,472	Income from external sources	£4,430
£20,500	Surplus from previous year	£56,950
£378,652	TOTAL INCOME	£414,840
	EXPENDITURE	
£276,324	Employees	£285,700
£23,784	Buy Back Contracts	£23,970
£4,420	Energy	£4,450
£12,576	Premises	£13,980
£34,796	Books, Classroom consumables (Capitation and training)	£10,749
£3,200	Office costs	£8,800
	Capital Construction	£77,271
£349,180	TOTAL EXPENDITURE	£424,920

Parents In School

We are proud to say that everyone is welcome at Helmdon School Parents, Grandparents and anyone in the community with an offer of help are always greatly appreciated.

Help comes in many shapes and forms. Parents who help with football or netball, grandparents who help with sewing and cross-stitch. Our local vicar, John Roberts comes in to listen to readers and teach a recorder group and past parents still volunteer their time and skills, such as Sylvie Essame who comes in weekly to take a dance club.

Geoff Gulliver has for many years lead a stamp club and we would like to take this opportunity to thank him for his dedication and commitment over the years.

Many parents with particular expertise i.e. ceramics, dance, design and technology, costume making, lend their skills at various times during the year. Parents of different faiths come in to talk to the children and share their beliefs and customs. Various governors also spend time helping in the classroom and in the ICT suite. The help and support is appreciated enormously by the staff and children and is often felt a rewarding experience by the helpers.

If any parent(s) would like to help in anyway, or know of people who have experience of topics that children are covering, we would welcome you at any time. Even if you do not feel that you have particular expertise, an extra pair of hands is often all that is needed, especially in reception, to wash paint pots, help dress the children, read with individuals or small groups etc.

Special Educational Needs (SEN)

We welcome all children into our school whatever their disability, making every effort to provide for their needs. Our aim at Helmdon is to include all our children in every aspect of school life, making sure that this is an enjoyable experience, enabling them to reach their full potential.

During their first term, all children are assessed and carefully monitored to ensure any problems are quickly identified and diagnosed. If there is an area of concern, the class teacher will make every effort to remedy the child's problem. If this is not successful within the first one or two terms, she will consult the Special Education Needs Co-ordinator, (SENCO) and together they will devise an Individual Education Programme (IEP). This will target the specific needs of that child, such as extra support in the class, specialist help and special materials and equipment. Often, with early identification, children master their difficulty and confidently continue their learning without further problems.

However, if these measures do not fulfil the child's needs there are various outside agencies that can give additional help and advice. Our first approach is to the link teacher from the Inclusion and Pupil Support (IPS), who has a wealth of experience and expertise from which we can draw. If provision from this source still does not resolve the child's learning difficulty, the LEA can make additional resources through a statement.

Mrs Julie Crouch joined us at the beginning of last Summer Term as our new Special Needs expert. We appreciate having a highly qualified and experienced teacher, who is maintaining our high standards of Special Needs provision. Mrs Crouch is supported by a team of dedicated Special Needs Assistants. The whole of the budget allocated to us for Special Needs is spent on staffing for these pupils. Additional funding for staffing and other resources for this group are purchased from the general school budget as additional funding for SEN. The SEN staff all participate in special training provided for them by the Local Education Authority.

With regard to those with physical disabilities, we are pleased to say that, while the layout of the school prohibits wheelchair access to all areas, our recent developments and extension have provided better facilities for those in wheelchairs, which include access to the main part of the school and some classrooms.

Resources Committee

The resources committee are appointed from within the Governors, the committee has responsibility for monitoring the school's over all financial and staffing situation. This includes assembling and monitoring of the school budget.

The day-to-day management of the school's finances is handled by the Headteacher and Secretary. The resources committee update the full Governors, meeting of any relevant changes to the initial budget.

As can be seen from the figures opposite our school finances continue to look healthy, the extension project that was completed this year used several years' buildings money which can only be used for building work and capital construction. The new extension was also partly funded by a seed challenge grant, which schools can apply for; this matches the schools contribution to the project.

At the beginning of this financial year the initial proposed LEA Budget provided for the School was £347,960. During the year additional funding was allocated by the LEA linked to a number of initiatives, including interactive whiteboards for the Foundation Stage class. The Surplus Carried Forward into 2004/2005 financial year was £59,950. This has now all been spent on the front extension.

Looking Back

I remember when I first came to Helmdon School. I was nervous because I didn't know what people would think of me. My first friend was Clare. She showed me around the school. Then I made lots of friends after that.

My most exciting memory was when I started Year 5. I thought I had been in this school all the time since Reception. I love it here. In Year 5 we had a snow day and a ball of snow went down my coat. It was extremely cold.

My favourite memory was the A Midsummer Night's Dream production. The dancing, singing and performing was so enjoyable. If Mrs Edmondson hadn't helped us it would have been terrible.

We visited Barton Hall last April. I remember the fun we had on the zip wire and playing aeroball on the trampoline.

These are some of the things that have made life fun for me so far at Helmdon School. I'm looking forward to doing the Harvest Dance and doing well in Year 6. I'm sure this year will be my best.

By Sophie Cox

Sports Round Up

For a small village school the number of after school activities and sports has been outstanding thanks in the main to the efforts of Mrs. Riley and a number of parents who have been able to make time to assist. A big thank you to all those involved.

Football and netball continued to play a large part in the after school activities with many of the children in years 5 and 6 taking part. Enthusiasm is high in each of these sports and in competition with other schools Helmdon pupils have always fared well.

Other activities for Key stage 2 children included rounders, cricket, rugby, athletics and cross-country, all of which were well attended. Many of our pupils showed real promise and this was borne out at both the Woodford Halse annual cross country event, cross country race at MCS, and the District Sports competition (despite the field events being cancelled) where Helmdon children performed well.

Both rugby and football at the school also benefited from the coaching received from the players of Northampton Town FC and Northampton Saints RFC, which many pupils enjoyed. This year we are fortunate to have Nick Bellamy sports coaches, who will be taking every class in the school for an hour a week to develop ball skills. Basketball club will also be resuming on a Monday after school.

Sport plays an important role in the development of children in Helmdon School and continues to have a high profile among both parents and staff. Many of our dedicated support staff have offered to run after school sports clubs and we will shortly be running football, netball and tag rugby sessions. Without such support these clubs would not be able to run.

Premises

This year's programme of refurbishment and improvement to the school premises has been very successful if a little fraught from time to time! We are finding benefits and opportunities for further improvements as we adjust to our new buildings. The offices and new reception area have made a tremendous difference to our working environment as well as providing a more welcoming and professional frontage.

The new corridor that has been created has had a significant impact on the Year 4 / 5 class and has also created a useful cloakroom.

Our staff room is now much larger and brighter. We are putting the dishwasher, kindly donated by Mrs Stone, to good use. The redecoration of this part of the school has given us a much-needed facelift!

Our main playground is still waiting to be resurfaced. We are assured that work will be carried out in the not too distant future. Mr Grainger the grounds maintenance contractor created a new seating area around the edge of the playground, which has extended its use. He also planted a variety of shrubs to make the banked area more attractive. Towards the end of October new shrubs will be planted along the path leading to our main entrance.

Premises

The LEA has contracted to replace some of the windows, which are particularly rotten. The outside of the building is to be painted and some of the Victorian windows are to be repaired.

We are looking forward to the hall flooring being replaced this year and the flooring in the reception area is to be extended into the girls toilets in the entrance as well as the reception toilets.

New doors are to be fitted to the reception entrance and also the hall doors are to be replaced. Hopefully we wont be carrying out any more building work for some time and we look forward to a more peaceful year ahead!

Information Computer Technology

ICT appears as a topic in its own right, also ICT is increasingly used in support of other activities, such as surfing the Internet to research specific topics, or using the excellent Espresso children's news service.

The last year has been a relatively quite year for ICT; the staff have been enjoying just using the new computers and improved network. We were however the first village building to benefit from broadband Internet access, this has transformed Internet access at the school making it much faster and more secure.

There's also been some housekeeping; Tony Wilson kindly lent his skills to tidy up the ICT suite by fitting shelves below the worktop. We've also added extra network points in every classroom to get them ready for Interactive whiteboards and Projectors, more on this later.

Another thank you, this time to everyone! We had enough Tesco vouchers this year to purchase another computer for the school. Well done and lets hope we get another good crop of vouchers this year.

So on to plans for this year, and back to those projectors! The first target is to improve ICT facilities for reception class, the youngest members of our school have been having to make do with a tired looking collection of computers

since we upgraded the rest of the school. This year we will be providing 3 brand new networked machines in the reception classroom. We're also benefiting from a government initiative for early years and have been given ring-fenced funding to buy a projector and interactive whiteboard for reception.

Happily reception won't be the only classroom to be blessed with projectors this year; we have sufficient ICT funds to also fit projectors in the year 6 and year 4/5 classrooms. This will give teachers the opportunity to use a whole new range of lesson materials, now available on specialised software or via the Internet. The teachers have all visited other local schools already using this technology, and are looking forward to getting to grips with the latest classroom aide.

*Nick Stone
Chair of Resources*

Health & Safety



The school's Health & Safety policy states, "The aim is for a culture in Helmdon School which recognises that controlling health and safety risks is an essential part of *everyone's* daily life. We believe that practising effective

health and safety management should be a part of every aspect of school life and should also encourage safety at home and on the road."

This lofty and all-encompassing aim means that the Premises and Health & Safety committee has a lot to live up to but, thankfully, we are not alone in our task. Every person that sets foot on the school premises - staff, children and visitors - constitutes a health & safety risk and yet, at the same time, represents a health & safety opportunity. There are more than 150 pairs of eyes and ears present at the school every working day so it is unlikely that a health & safety risk would go unnoticed! We are always eager to listen to anyone that uses the school who might have concerns or suggestions regarding health and safety issues so please speak to Sue Blackburn at the school, or myself on 01295 768090.

I am pleased that the building work at the school has been completed without too much incident from a health & safety point of view. Those of you who have tried to do any DIY

with young children around know the potential for trouble so imagine that multiplied many times over! Mixing children with scaffolding, skips and circular saws is generally not a good idea, and any time that the school has outside contractors on the premises is a time of great angst for staff, parents and governors alike.

At the heart of effective health and safety management is "risk assessment". All of us carry out risk assessments every day, probably without realising it. Every time we cross the road we carry out a risk assessment in the split second in which we look both ways to assess the state of the traffic before deciding whether or not it is safe to cross. Many other everyday decisions are based on risk assessment. The staff and governors are obliged to carry out literally dozens of risk assessments every year covering all aspects of school activity. Indeed, many activities (such as school trips) cannot legally go ahead without completing the appropriate risk assessment.

Parents should feel assured that health and safety is given the highest priority and is treated with the utmost seriousness at Helmdon School. It is the aim of the Premises and Health & Safety committee that it remains so.

Danny Moody, Chair, Premises and Health & Safety Committee.

Friends of Helmdon School

The Friends of Helmdon School comprises of a committee of dedicated parents whose main objective is to raise funds for additional school equipment.

Friends of Helmdon School have been running for over 22 years. Over the last year we have held discos, a Christmas raffle, cake sales, selling tea towels and other fundraising events. We have managed to raise over £3000. FOHS have provided seating in the bottom playground and hymn packages for use in school assemblies. We will also be providing funds for the school to purchase musical instruments with.

Our aim over the next school year is to raise sufficient funds to purchase a box of fiction books for each classroom, which supports the school initiative in raising reading standards.

In addition to all of our fundraising events we provide much needed and appreciated support at the many performances and productions held throughout the year. This included refreshments during the memorable summer production "A midsummer Nights Dream" and we hope to host a series of events to include a Carols Around the Tree with Mulled Wine to celebrate the erection of our Christmas tree. This is in addition to our usual support of the Christmas party where each child receives a small present from Father Christmas, refreshments on Sports Day and the Year 6 leaving presents.

We can only continue to achieve this with ongoing dedicated support from all parents throughout the years fund raising events.

Thank you for all your support over the last year.

*Nickie Waghorne
Chairperson*

Reading KS1 (Age 7)

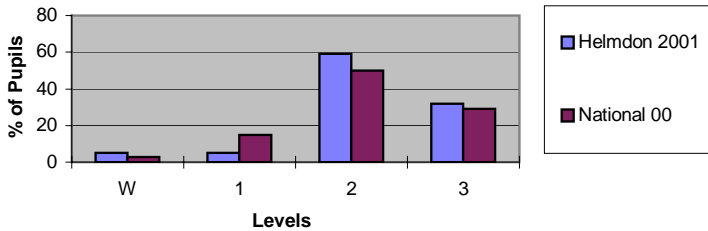
Tests

Level	Helmdon 00	Helmdon 01	National 00
W	0	5	3
1	0	5	15
2	57	59	50
3	43	32	29

Teacher Assessment

Helmdon 00	Helmdon 01	National 00
0	5	3
0	0	13
57	73	55
43	23	28

Reading Tests



Writing KS1 (Age 7)

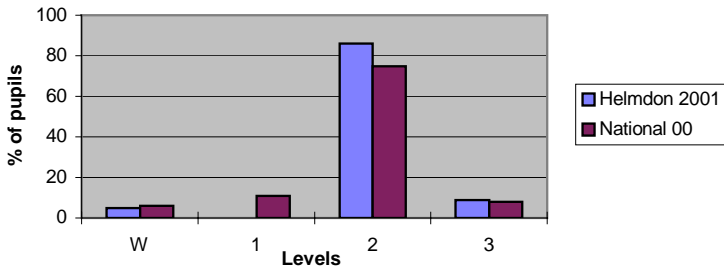
Tests

Level	Helmdon 00	Helmdon 01	National 00
W	0	5	6
1	0	0	11
2	78	86	75
3	21	9	8

Teacher Assessment

Helmdon 00	Helmdon 01	National 00
0	5	5
0	0	13
71	68	70
29	27	12

Writing Test



Mathematics

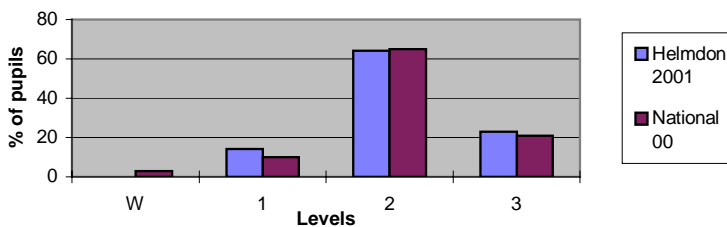
Tests

Level	Helmdon 00	Helmdon 01	National 00
W	0	0	3
1	0	14	10
2	57	64	65
3	43	23	21

Teacher Assessment

Helmdon 00	Helmdon 01	National 00
0	5	2
0	0	10
71	73	63
29	23	25

Mathematics

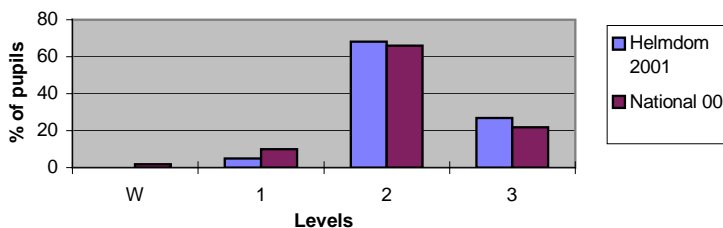


Science Assessment KS1 (Age 7)

Level	Helmdon 00	Helmdon 01	National 00
W	0	0	2
1	0	5	10
2	14	68	66
3	86	27	22

At Key Stage 1 there is no test level for Science

Science Test



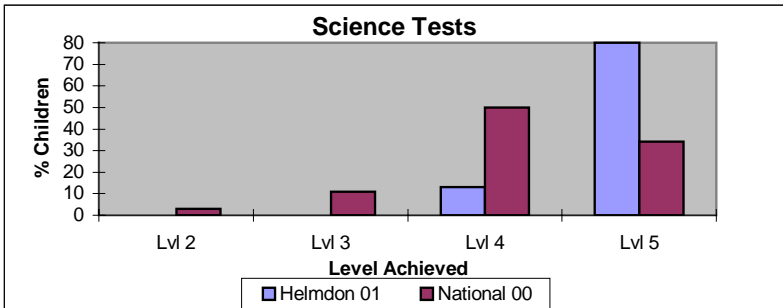
Science KS2 (Age 11)

Tests

Levels	Helmdon 00	Helmdon 01	National 00
Lvl 2	0	0	3
Lvl 3	10	0	11
Lvl 4	70	13	50
Lvl 5	20	80	34

Teacher Assessments

Helmdon 00	Helmdon 01	National 00
0	0	4
10	0	17
60	33	46
30	67	29



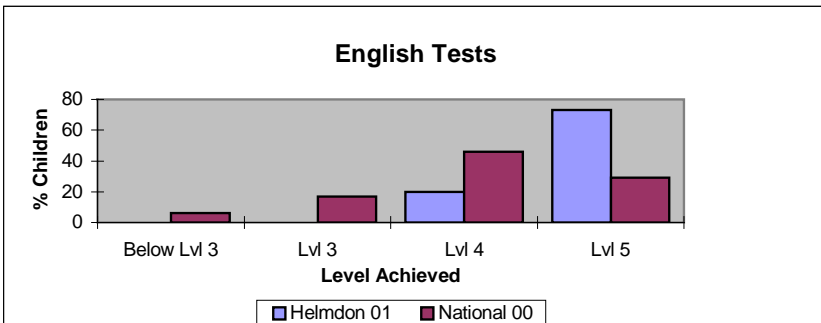
English KS2 (Age 11)

Tests

Levels	Helmdon 00	Helmdon 01	National 00
Below L	10	0	6
Lvl 3	0	0	17
Lvl 4	50	20	46
Lvl 5	40	73	29

Teacher Assessments

Helmdon 00	Helmdon 01	National 00
10	0	7
20	0	23
30	67	49
40	33	22



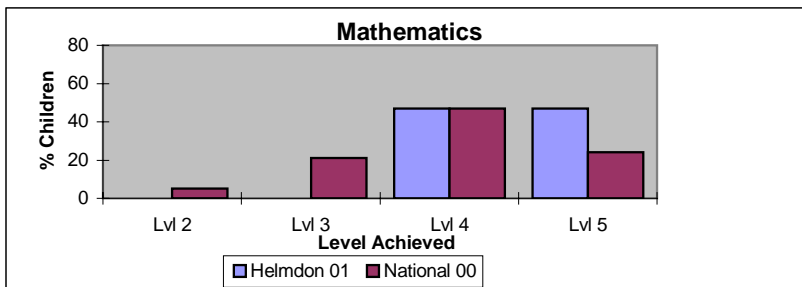
Mathematics KS2 (Age 11)

Tests

Levels	Helmdon 00	Helmdon 01	National 00
Lvl 2	0	0	5
Lvl 3	10	0	21
Lvl 4	70	47	47
Lvl 5	20	47	24

Teacher Assessments

0	0	6
10	0	22
40	47	48
50	53	23



N.B. In 2001 there was 1 pupil absence accounting for 7%

Reading KS1 (Age 7)

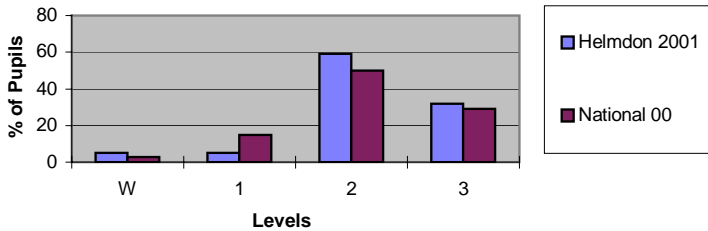
Tests

Level	Helmdon 00	Helmdon 01	National 00
W	0	5	3
1	0	5	15
2	57	59	50
3	43	32	29

Teacher Assessment

Helmdon 00	Helmdon 01	National 00
0	5	3
0	0	13
57	73	55
43	23	28

Reading Tests



Writing KS1 (Age 7)

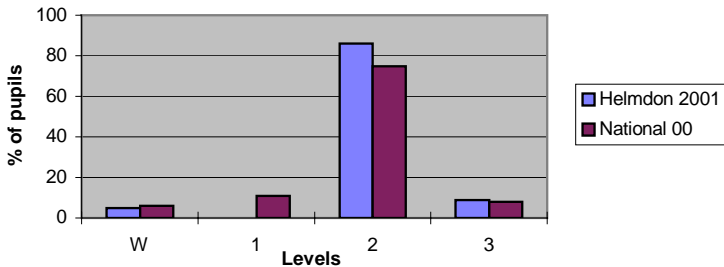
Tests

Level	Helmdon 00	Helmdon 01	National 00
W	0	5	6
1	0	0	11
2	78	86	75
3	21	9	8

Teacher Assessment

Helmdon 00	Helmdon 01	National 00
0	5	5
0	0	13
71	68	70
29	27	12

Writing Test



Mathematics

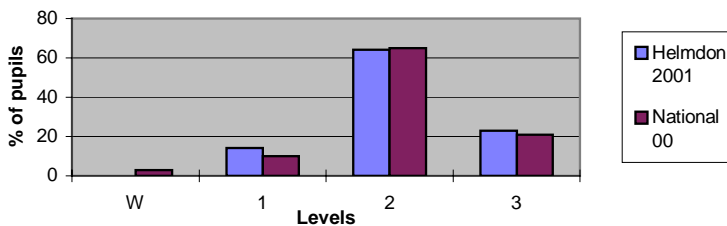
Tests

Level	Helmdon 00	Helmdon 01	National 00
W	0	0	3
1	0	14	10
2	57	64	65
3	43	23	21

Teacher Assessment

Helmdon 00	Helmdon 01	National 00
0	5	2
0	0	10
71	73	63
29	23	25

Mathematics

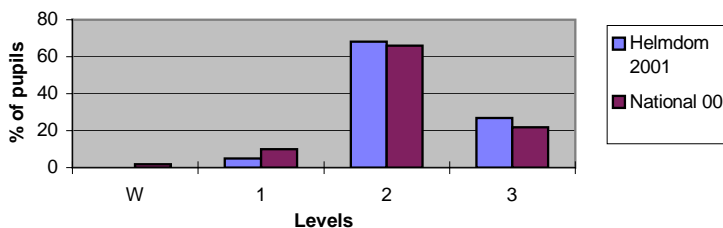


Science Assessment KS1 (Age 7)

Level	Helmdon 00	Helmdon 01	National 00
W	0	0	2
1	0	5	10
2	14	68	66
3	86	27	22

At Key Stage 1 there is no test level for Science

Science Test



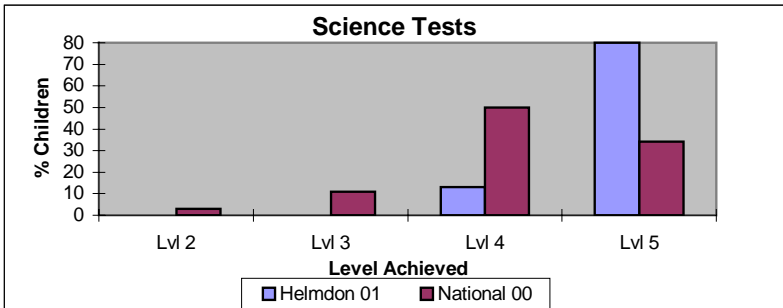
Science KS2 (Age 11)

Tests

Levels	Helmdon 00	Helmdon 01	National 00
Lvl 2	0	0	3
Lvl 3	10	0	11
Lvl 4	70	13	50
Lvl 5	20	80	34

Teacher Assessments

Helmdon 00	Helmdon 01	National 00
0	0	4
10	0	17
60	33	46
30	67	29



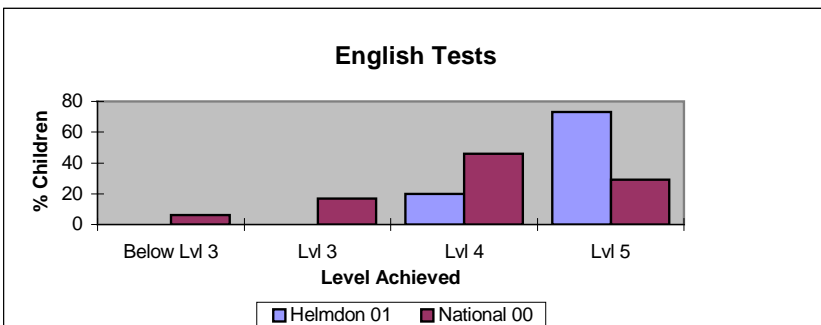
English KS2 (Age 11)

Tests

Levels	Helmdon 00	Helmdon 01	National 00
Below L	10	0	6
Lvl 3	0	0	17
Lvl 4	50	20	46
Lvl 5	40	73	29

Teacher Assessments

Helmdon 00	Helmdon 01	National 00
10	0	7
20	0	23
30	67	49
40	33	22



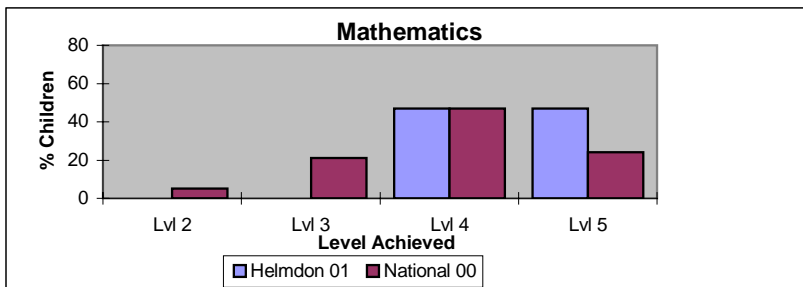
Mathematics KS2 (Age 11)

Tests

Levels	Helmdon 00	Helmdon 01	National 00
Lvl 2	0	0	5
Lvl 3	10	0	21
Lvl 4	70	47	47
Lvl 5	20	47	24

Teacher Assessments

0	0	6
10	0	22
40	47	48
50	53	23



N.B. In 2001 there was 1 pupil absence accounting for 7%

Reading KS1 (Age 7)

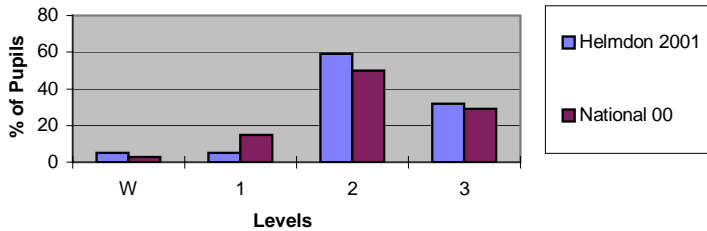
Tests

Level	Helmdon 00	Helmdon 01	National 00
W	0	5	3
1	0	5	15
2	57	59	50
3	43	32	29

Teacher Assessment

Helmdon 00	Helmdon 01	National 00
0	5	3
0	0	13
57	73	55
43	23	28

Reading Tests



Writing KS1 (Age 7)

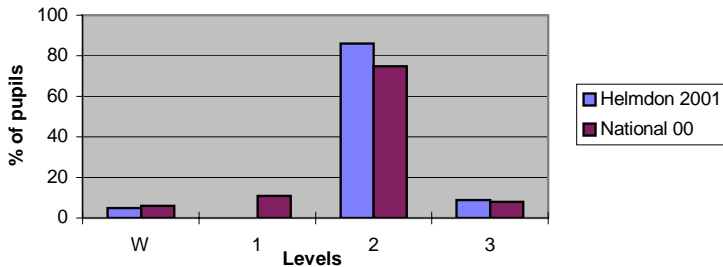
Tests

Level	Helmdon 00	Helmdon 01	National 00
W	0	5	6
1	0	0	11
2	78	86	75
3	21	9	8

Teacher Assessment

Helmdon 00	Helmdon 01	National 00
0	5	5
0	0	13
71	68	70
29	27	12

Writing Test



Mathematics

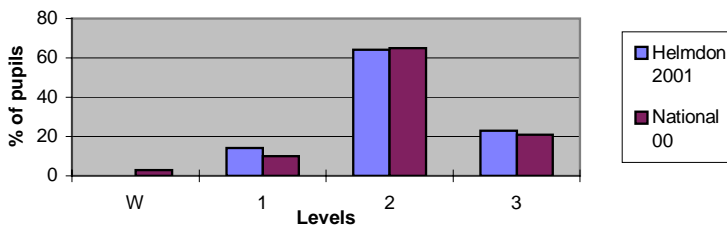
Tests

Level	Helmdon 00	Helmdon 01	National 00
W	0	0	3
1	0	14	10
2	57	64	65
3	43	23	21

Teacher Assessment

Helmdon 00	Helmdon 01	National 00
0	5	2
0	0	10
71	73	63
29	23	25

Mathematics

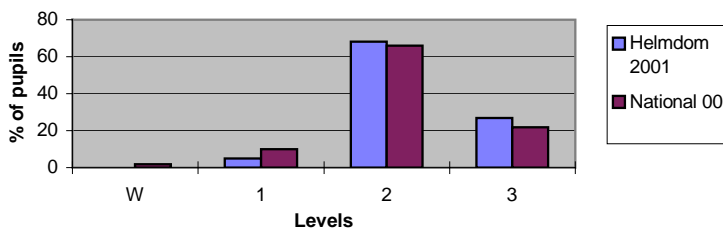


Science Assessment KS1 (Age 7)

Level	Helmdon 00	Helmdon 01	National 00
W	0	0	2
1	0	5	10
2	14	68	66
3	86	27	22

At Key Stage 1 there is no test level for Science

Science Test



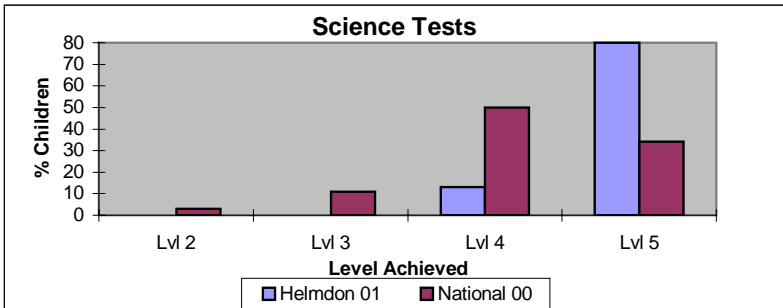
Science KS2 (Age 11)

Tests

Levels	Helmdon 00	Helmdon 01	National 00
Lvl 2	0	0	3
Lvl 3	10	0	11
Lvl 4	70	13	50
Lvl 5	20	80	34

Teacher Assessments

Helmdon 00	Helmdon 01	National 00
0	0	4
10	0	17
60	33	46
30	67	29



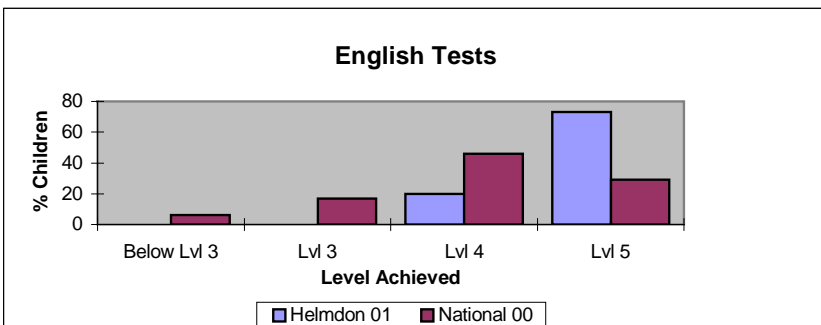
English KS2 (Age 11)

Tests

Levels	Helmdon 00	Helmdon 01	National 00
Below L	10	0	6
Lvl 3	0	0	17
Lvl 4	50	20	46
Lvl 5	40	73	29

Teacher Assessments

Helmdon 00	Helmdon 01	National 00
10	0	7
20	0	23
30	67	49
40	33	22



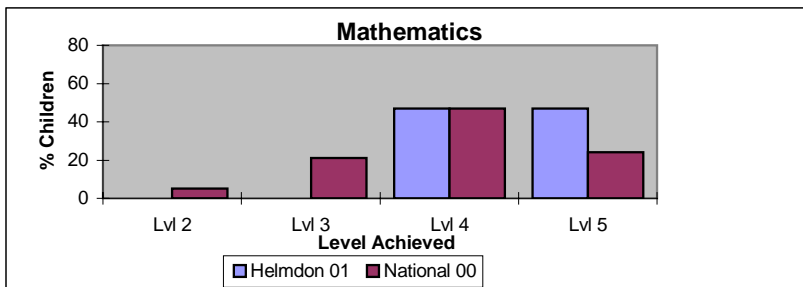
Mathematics KS2 (Age 11)

Tests

Levels	Helmdon 00	Helmdon 01	National 00
Lvl 2	0	0	5
Lvl 3	10	0	21
Lvl 4	70	47	47
Lvl 5	20	47	24

Teacher Assessments

0	0	6
10	0	22
40	47	48
50	53	23



N.B. In 2001 there was 1 pupil absence accounting for 7%